



# The Plantation Orchid Society

An Affiliate of the American Orchid Society

Volume 10 Number 10

October 2, 2012

## TUESDAY, Oct. 2, 2012

Setup/Social 6:45 – 7:15 p.m.  
Auction starts at 7:15 – 9:00 p.m.

**Deicke Auditorium**  
5701 Cypress Road

**Rose Maytin**  
President  
954-401-3171

**Tony Blanc**  
1<sup>st</sup> Vice President  
954-236-3441

**Elise Chapman**  
Second VP/Membership  
954-584-2414

**Sybil LeBlanc**  
Treasurer  
954-476-9396

**Karen Reynoldson**  
Secretary  
954-792-1195

**Cynty Deming**  
Historian/Webmaster  
954-835-5058

**Phyllis Durst**  
Trustee/Event Coordinator  
954-584-4796

**Judy Revier**  
Trustee/Hospitality, Sunshine  
954-723-0723

**Lorna Diaz**  
Trustee/Hospitality  
954-636-0730

**Angela Puca**  
Trustee/Public Relations  
954-791-1874

**Beverly Warde**  
Trustee  
(954) 336-3854

**Mary Lee Tabelaing**  
Trustee/Newsletter Editor  
954-473-0456

### *From the President*

Dear POS Members and friends,

As you know, our auction is Tuesday, October 2, 2012. Please bring a couple of friends and some snacks to the Auction. We still need people to help set up and track bids. Also, please bring a few boxes to the Auction for our guests so that they can bring all their beautiful plants home. If you haven't done so already, post a flyer everywhere you go letting people know about our auction. This is our main fund raiser for the year that pays for the wonderful speakers and venue fees.

It was a special privilege for us to have Greg Allikas our September speaker. I found his presentation and informative slide show on Dendrobiums very enlightening. It would be wonderful to have him come back and demonstrate his photography techniques.

Our Holiday party is Wednesday, December 5th, 2012. Enclosed please find the Holiday party application. Be sure to reserve your seat by filling out the application and mail your check to Sybil LeBlanc. Seating is limited.

See you at the meeting,

Sincerely,  
Rose Maytin,  
President



**Check out  
the Plantation  
Orchid Society  
on Facebook**



**Volunteers are STILL needed to help with  
the October 2nd Auction.**

**Please contact Rose if you are  
willing to help us out! And don't forget  
to bring your friends and neighbors!**

# CONGRATULATIONS TO OUR SEPTEMBER RIBBON WINNERS!



**BLUE RIBBON**  
V. Margaret Mabbs 'Pink Cloud'  
Mary Lee Tabeling



**BLUE RIBBON**  
Den. Sonia  
Teresa Garcia



**BLUE RIBBON**  
Pot. Caesar's Head  
Helene Albee



**BLUE RIBBON**  
Brassavola Little Stars



**BLUE RIBBON**  
Chocolate Drop 'Volcano Queen'  
Helene Albee



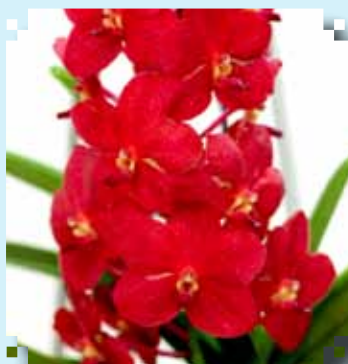
**BLUE RIBBON**  
Ascda. Ken Kone 'Crownfox Spots'  
Jeff Tucker



**BLUE RIBBON**  
Bc. Hippdamia  
Carole Schwimmer



**BLUE RIBBON**  
Blc. Mem Crispin Rosales  
'Carmela'  
Joanne Buckley



**BLUE RIBBON**  
Ascda. Banjong Delight  
'Adkins Red'  
Joanne Buckley



**BLUE RIBBON**  
Blc. Yen Corona  
'Green Genie'  
Jeff Tucker

As a reminder, all plants brought in for the show table should be free of pests and diseases. Take some time to stake and clean the leaves of your plants, this allows for better presentation. Also, please do not bring newly-purchased plants for the show table. The show table is an outlet for members to share the great job they have done in growing and flowering their orchids; therefore, please respect the unwritten rule of owning and growing an orchid for a minimum of 6 months.



# The Plantation Orchid Society



**RED RIBBON**  
Blc Cherry Suisse 'Emily'  
Mary Lee Tabeling



**HON. MENTION**  
Den. P.M Blue  
Phyllis Durst



**HON. MENTION**  
Blc. Noemi Santiago  
Phyllis Durst



**HON. MENTION**  
C. Bryce Canyon  
Phyllis Durst

## Our September Speaker was **GREG ALIKAS** Photographer and Grower

Our September speaker was Greg Allikas, known the world over for his brilliant photographs of orchids, flowers and foliage. He presented us with a wonderful slide show featuring stunning photos of Pedilonum Dendrobiums, orchids found primarily in New Guinea and Indonesia. The flowers are characteristic of the section exhibiting a long mentum, or chin. The flowers are usually produced from the lower nodes on second-year canes. Their charm is in the profusion of



flowers produced. These plants require dry rest period in the winter and early spring, during which watering is greatly reduced and fertilizer is withheld. They are deciduous and can handle a South Florida winter. He hangs his outside in the winter from a dead orange tree. When buds start to form in the spring, he resumes watering. One tip he gave us was to use Bronner's Peppermint Soap at rate of 1 tsp. in quart of water with 2 tsp. isopropyl alcohol for spider mites. Greg can be reached at: P.O. Box 6275 - West Palm Beach, FL - 33405 or e-mail - [graphicgreg@orchidworks.com](mailto:graphicgreg@orchidworks.com) His website: [www.orchidworks.com](http://www.orchidworks.com)



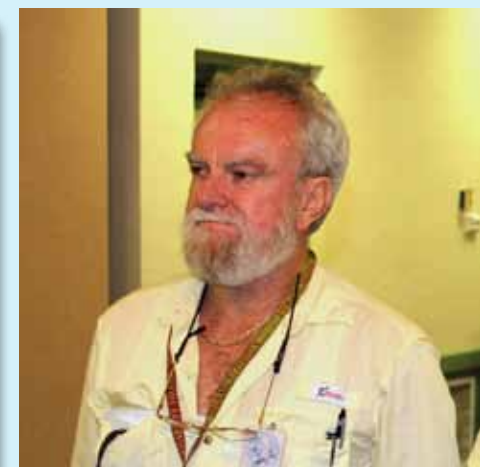
## **HOSPITALITY**

Thanks to everyone who brought food to the September meeting.  
Chex Mix and Chips - Joseph Mihalic, Salsa and Dip - Sybil LeBlanc, Garlic Bread with Pep - Tracy Moulton, Chocolate Cake - Judy Revier, Banana Bread, Guacamole and Chips - Karen Reynoldson, Lemon Bisque - Judy Bontrager, Mini Eclairs - Elise Chapman, Wraps - Daniel R. Saroza.

Remember, we always love the treats you bring but:

**PLEASE DON'T FORGET TO SIGN THE SHEET SO WE CAN THANK YOU IN NOVEMBER.**  
Coffee and soda will be provided by the Society courtesy of Judy Revier.

# SEPTEMBER HIGHLIGHTS



## UPCOMING POS CALENDAR

- October 2: POS Annual Auction
- November 3: Ramble
- December 5: Annual holiday party

## POS COOKBOOK RECIPES

Because of your great response to the dishes that were brought to the anniversary dinner, we have decided to try and make a cookbook. We are asking for your recipes for the dish you brought to the meeting and we will try to assemble a POS cookbook for us all to enjoy. E-mail the recipe to [posorchids@gmail.com](mailto:posorchids@gmail.com))



# The Plantation Orchid Society



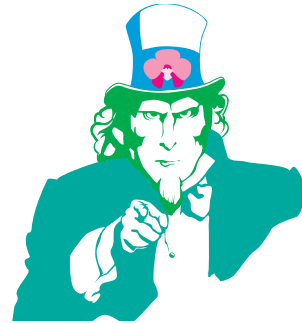
Joanne Buckley takes 2 Blue Ribbons for her beautiful orchids



Prospective members check out the POS



Another great show table.



## THE POS NEEDS YOUR EXTRA PLANTS!

If you have divided some of your orchids for the auction, please contact Rose and bring them to the meeting on Tues.

## CURRENT EVENTS

### 66th Miami International Orchid Show

Friday, October 5, 2012 - 10:00 am - Sunday,  
October 7, 2012 - 5:00 p.m.

Bank United Center at University of Miami  
1245 Dauer Drive Coral Gables, Florida  
33146

Delray Beach, FL. For more information: visit  
their website <http://delraybeachorchidsociety.com/>.

### Delray Beach Orchid Society 21st Annual Show

October 26-28, 2012 10:00 a.m. to 5:00 p.m.

### Mounts Botanical Garden Fall Plant Sale

November 3, 2012 9:00 a.m. to 5:00 p.m. &  
November 4, 2012 9:00 a.m. to 4:00 p.m.



**PLANTATION ORCHID SOCIETY  
ANNUAL AUCTION**

**TUESDAY, OCTOBER 2, 2012**

**PREVIEW STARTS AT 7:00 P.M.  
AUCTION STARTS PROMPTLY AT 7:15 P.M.  
Cash, Checks & Credit Cards Accepted**

**DEICKE AUDITORIUM  
5701 CYPRESS RD.  
PLANTATION, FL 33317**

(To get to Deicke, take Broward to Fig Tree Lane,  
go north 1 block to Cypress Rd. then turn right and Deicke is on the left.)

**[www.plantationorchidsociety.com](http://www.plantationorchidsociety.com)  
e-mail: [posorchids@gmail.com](mailto:posorchids@gmail.com)  
OR Phone: 954-584-4796**

**UP FOR AUCTION WILL BE MANY BEAUTIFUL ORCHIDS  
FROM BOTH LOCAL AND HAWAIIAN GROWERS  
PLEASE BRING YOUR FRIENDS!**

**Our regular POS meeting in November is being replaced this year with a ramble by invitation of the Deerfield Beach Orchid Society.**

A Personal Invitation to Members of Plantation Orchid Society:  
To the Deerfield Beach Orchid Society Second Annual  
Business Class Motor Coach Trip  
Saturday, November 3, 2012

- 7:00 a.m. Leaving Deerfield Beach Woman's Club parking lot  
910 E. Hillsboro Blvd., Deerfield Beach, FL 33441
- 7:30 a.m. A quick stop at Exit 99 on Turnpike (Okeechobee Blvd., (S.E. Quadrant)  
College Plaza Shopping Center, Behind "Chick Fill A" Look for the red ribbon on the tree.
- 9:45 p.m. Return to Deerfield Beach Women's Club Parking with a prior stop at Okeechobee Blvd.,  
Chick Fill A.

We will be going up the East Coast and stopping at:

Odom's Orchids, Inc

Ritter Tropic Orchids

Chapmans's Orchids/Our Vital Earth

Mount Dora Plant and Garden Fair on Lake Dora With numerous Orchid Growers, Plants and Crafts

This will be a memorable day!!!

What to Bring: Carton or box with your name on it to put under the bus for the orchids you just can't live without.

Cost: \$70.00 per person. This includes breakfast, lunch and luxury bus, drinks, snacks and all the fun you can soak up. We will stop at Cracker Barrel on the way back for dinner. (NOT INCLUDED) We will pass the hat to tip our same driver James.

!!!!THERE ARE NO REFUNDS!!!! Mail check directly to Madeline.

Deadline for Reservations: October 12, 2012

Contact: Madeline Felton, 800 S.W. 17th Street, Boca Raton, FL 33486,

Phone: 954-415-6163 or 828-963-8808. Sorry no E-mail.

If you had fun last year, I have a few more surprises for you this year. Our Motor Coach is small and exclusive so make your reservation soon. There are only 36 seats.

Sincerely:

Madeline

Deerfield Beach Orchid Society.

**Don't Forget To Sign Up For Our Annual Holiday Party  
Reservations are limited. First come first serve.**

**Plantation Orchid Society**

**2012 Holiday Dinner Registration Form**

**Date:** December 5<sup>th</sup>, 2012

**Time:** 7:00pm - 10:30pm

**Location:** Fort Lauderdale Country Club  
415 E. Country Club Circle / Plantation, FL 33317

Complimentary valet

**Member Price:** \$38.00/Person

**Non-Members:** \$50.00/Person

**Buffet Holiday Menu:**

Appetizer – Fruit & Cheese Platter

Tossed Salad with an assortment of homemade dressings and bread

Sliced Sirloin served with a red wine reduction sauce

Mahi Mahi served with a mango-papaya salsa

Penne a la Vodka

Vegetable Medley

Roasted Red Bliss Potatoes

**Dessert:**

Holiday Cookies

Yule Log Cake

**Beverages:**

Soft Drinks, Iced Tea & Coffee Service

Cash bar available for all other drinks



**Reservation:**

| Name | Member or Guest?                        |
|------|---|
|      | ( ) Member \$38.00 ( ) Guest<br>\$50.00 |
|      | ( ) Member \$38.00 ( ) Guest<br>\$50.00 |

If you have a preference of what members you would like to sit with please list them here. There is no guarantee but we will do our best to sit you together. \_\_\_\_\_